

## Dream Weaver Rose Choker

(A variation of Winter Rose)

**Finished Size:** 18" long x 3.25" wide

Skill level is easy.

### **Materials:**

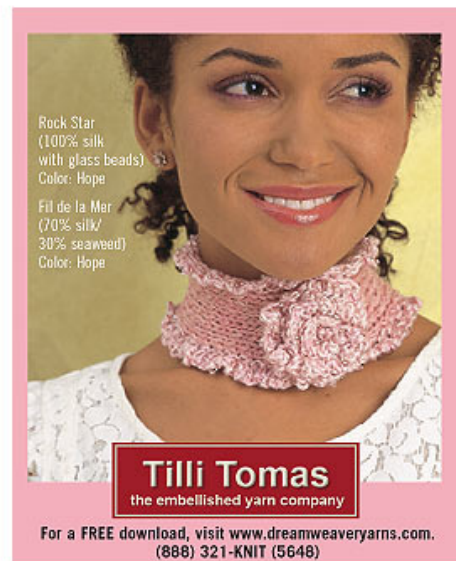
1 skein of Tilli Tomas Fil de la Mer (70% Silk, 30% Kelp Seaweed; 140yds/50g) (work doubled)

1 skein of Tilli Tomas Rock Star (100% Silk with Glass Beads; 100-150yds/100g) (approx. 50yds needed for flower and ruffle)

US 7 (4.5mm) needles

Tapestry needle

Gauge: 6 sts per inch in pattern with US 7 (4.5mm) needles



**Pattern stitch:** 1x1 rib (Row 1: (k1, p1) to end; Row 2 and all following rows: k the knit sts and p the purl sts.)

### **Terms and Abbreviations:**

BO = bind off

CO = cast on

dec = decrease

k = knit

kfb = K into the front of the stitch but do not take the stitch off the needle, then knit into the back of the same stitch, and then remove from needle. (This creates a one stitch increase.)

p = purl

pu & k = pick up and knit

RS = right side

st(s) = stitch(es)

tog = together

NOTE: Work in pattern stitch unless otherwise noted.

### **Pattern:**

Choker:

Working Fil de la Mer doubled, CO 13 sts.

Row 1: Work in pattern to last stitch, kfb last st (14 sts).

Row 2: Work in pattern to last stitch, kfb last st (15 sts).

Work in pattern (k1, p1 rib) over 15 sts until piece measures 16".

Make flower hole:

Next Row: Work 5 sts, BO 5 sts, work 4 sts.

Next Row: Work 5 sts, CO 5 sts, work 5 sts.

Work in pattern for 1".

Next row: Dec 1 st (work 2 sts tog) at beginning and end of row (13 sts).

Bind off in rib pattern.

Ruffle (perform on each side): With Rock Star and RS facing (side with knit stitch on each end is RS), pu & k sts evenly along straight length of scarf.

Next two rows: Kfb to end.

BO knitwise.

Tack down ruffle edges as you weave in ends with tapestry needle.

Rose:

With Rock Star CO 50 sts.

Next two rows: Kfb to end.

BO knitwise.

Wind and form into the shape of a flower and sew at bottom.

Sew flower to the front of scarf at the opposite end of flower hole as you would a button.